



Attaching Frame Walls

Attaching interior frame walls to the exterior ECO-Block walls can be accomplished in a number of ways.

Method 1:

- Prior to concrete placement, locate the interior walls. Insert the proper anchors through the foam and into the concrete core. Upon concrete placement, the anchors will be embedded into the concrete core.

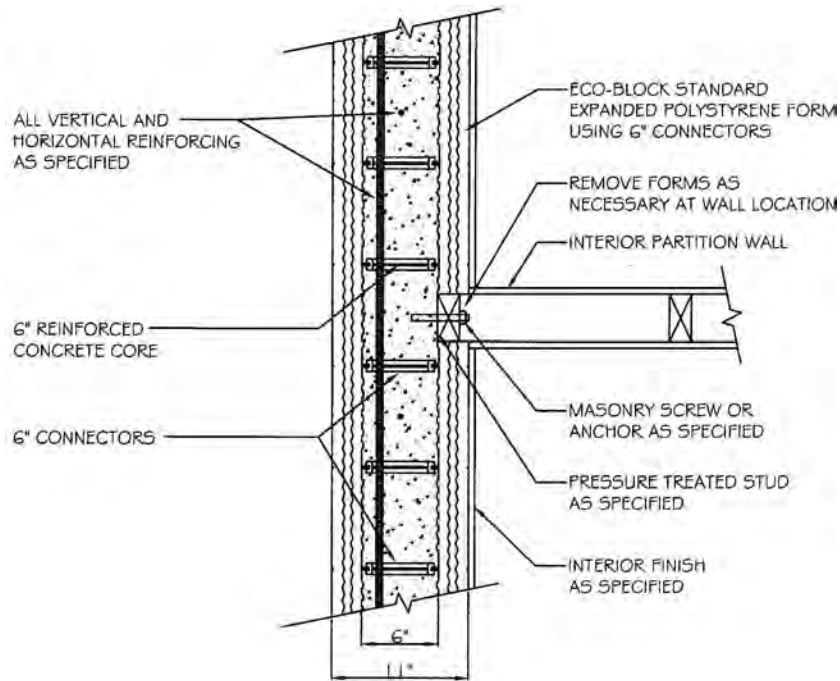
Method 2:

- If the interior walls happen to fall on one of the webs that are located every 8" on center, simply screw the stud to the web with a coarse thread drywall screw.

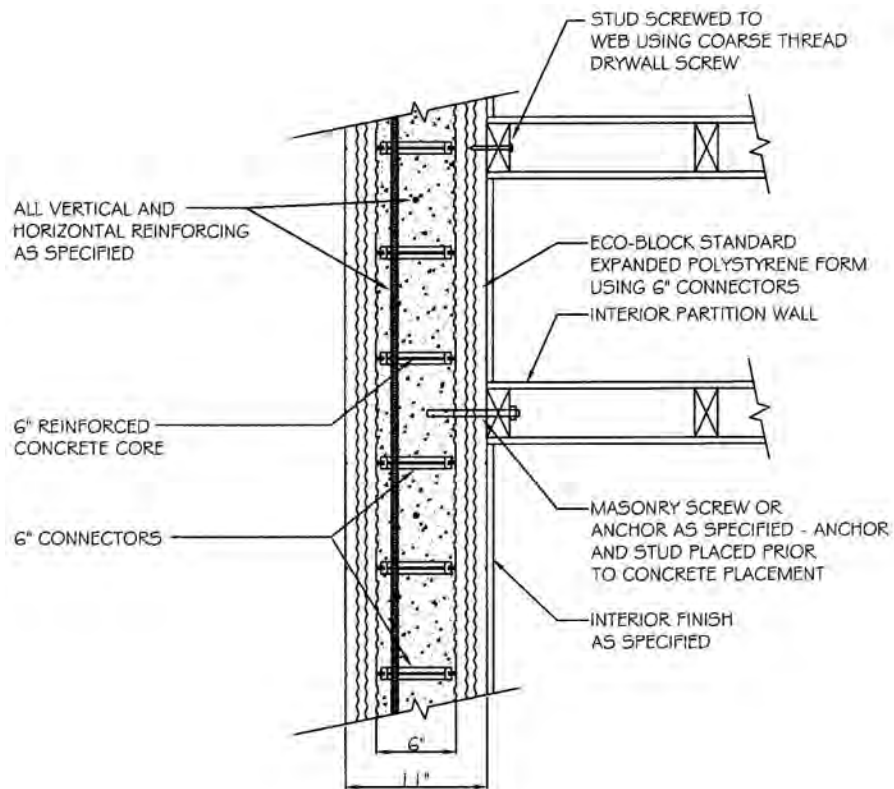
Method 3:

- Locate the interior wall partition and remove the section of foam. By removing the foam, the treated stud can now be anchored directly to the concrete core with the proper mounting hardware.

See the illustrations on the following page.



Method 1 & 2 (top view)





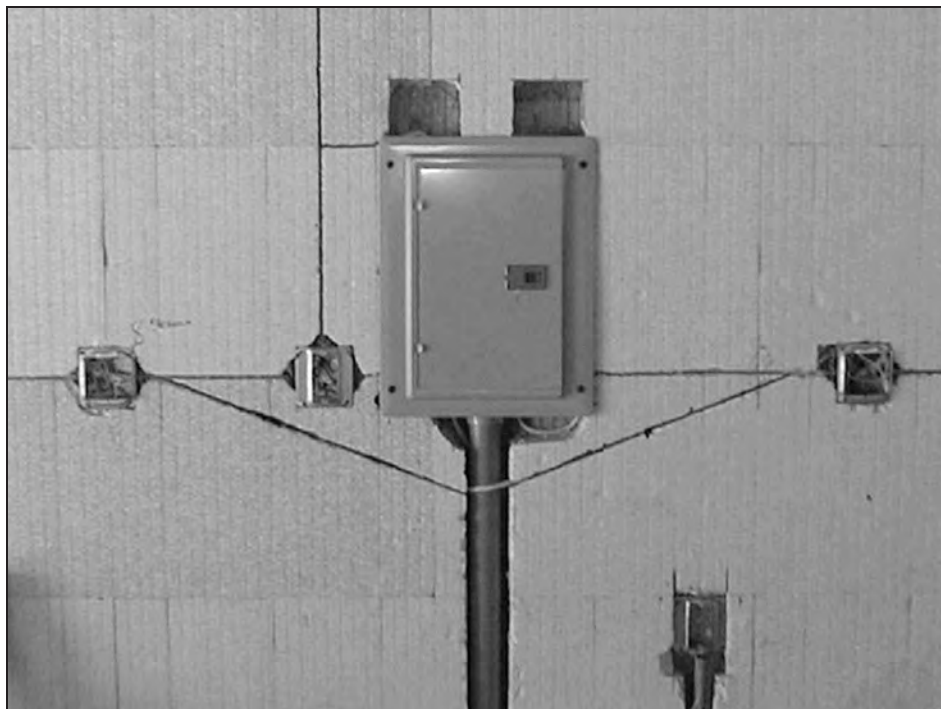
Plumbing and Electrical Lines

Electrical and plumbing lines are easily installed into the ECO-Block wall. For electrical boxes, use a hot knife or router to remove the foam at the desired location. Once the foam is removed the boxes can be screwed to the webs using a standard drywall screw, screwed to the concrete using concrete anchors, or glued to the concrete.

To create channels in the foam for wiring, use a hot knife, router, or electric chain saw with a depth stop. Angle the channel so it has a lip on the bottom to hold the cable in place, or spot glue the cable with EPS compatible foam adhesive.

The channels for the plumbing lines will be created in the same fashion. For larger lines furring out the wall may be necessary.

Plumbing can be installed inside the wall cavity prior to the pour, but this can create a severe weak spot, so be sure to check with an engineer first..



Technical Tip:

Cut horizontal runs at the course-to-course interlock, since webs are cut short at this point.