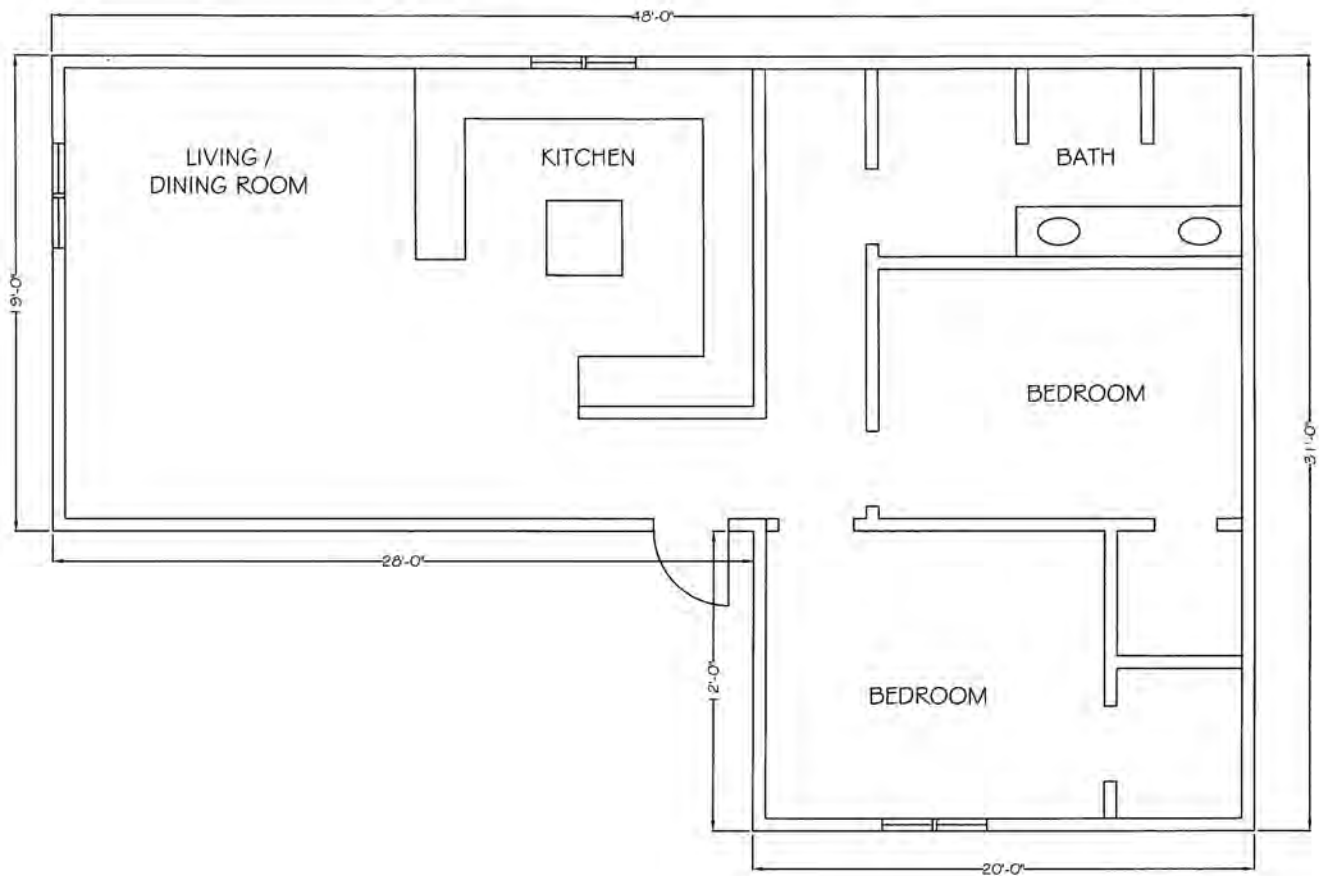




Design

If you are starting with plans designed for another wall system, such as wood frame or concrete block, it is usually easiest to line up the interior side of the new ICF walls with the interior side of the original walls. If you do this all the interior dimensions can stay the same.

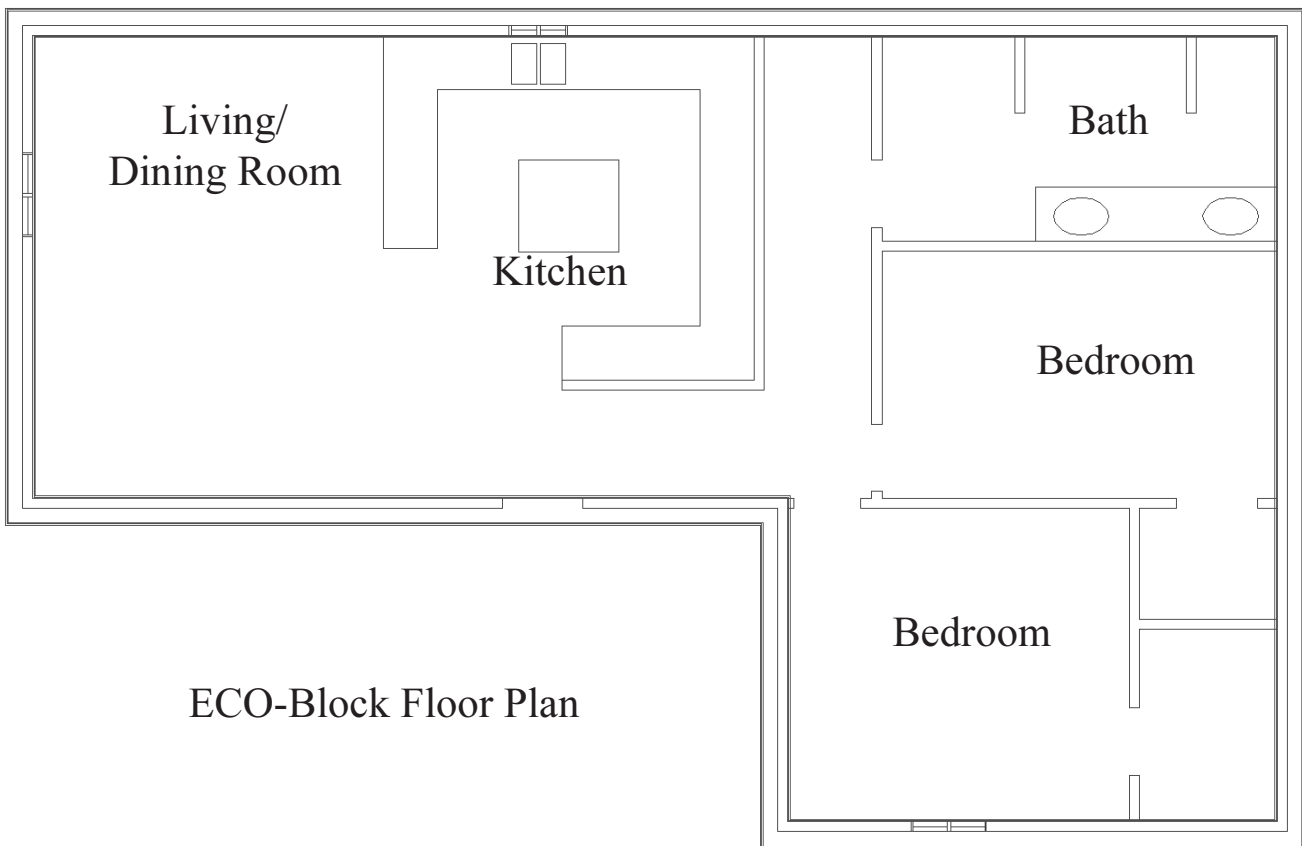
Be sure to check for any outside site obstructions such as trees, walls, fences, etc.



Original Floor Plan



ECO-Block is so easy to cut that wall lengths, heights, and openings can all be selected without regard for where the joints between forms fall.



ECO-Block Floor Plan